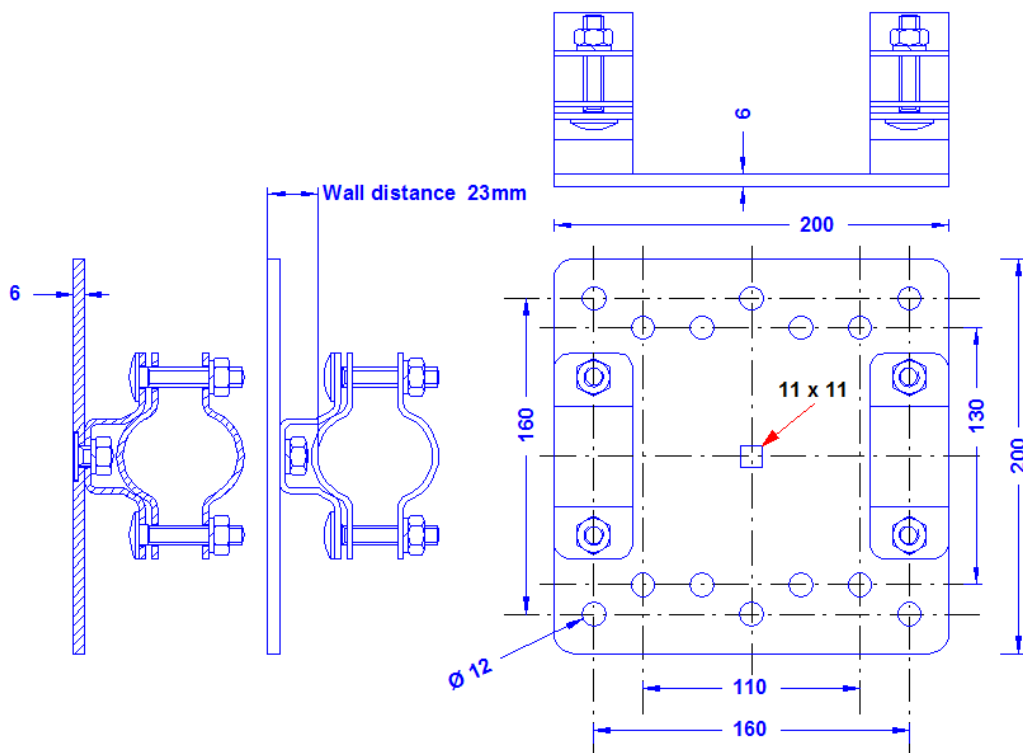
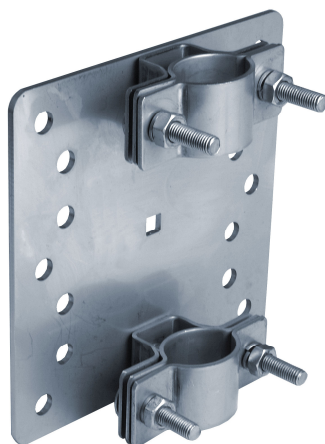


| | |
|----------------------|---|
| Specification | <p>Double wall pipe clamp for fastening of masts 40-50mm \varnothing with a height of up to 12m (when using two pieces) to the wall. Weight: 2,7 kg Stainless steel 1-4301</p> |
| Article No. | 68 01 99 |

Customs tariff No.: 85389099



| | |
|--|--|
| Description | RoHS2 (Guideline 2011/65/EU) and REACH (Regulation (EG) No.1907/2006): The substance-requirements and all other requirements of this regulations are observed by this product. |
| Material of the clamp/ the wall plate | Stainless steel 1-4301 |
| Fitting of the clamp | For tubes 40-50mm \varnothing |
| Screws/nuts/spring washers (all stainless steel) | 2 x DIN603M10X16; 4 x DIN603M10X50/ 6 x DIN934M10/ 6 x spring washer 10mm |