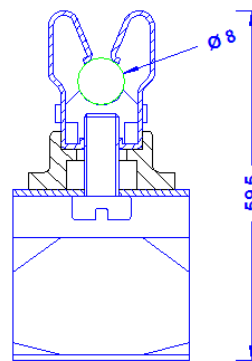
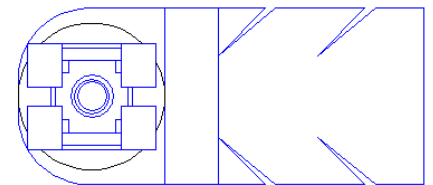


Specification	Roof tile claw made of stainless spring band steel 1.4310 with a stainless steel holder 8mm. for clamping on roof tiles for the conductor leading on a tiled roof. Weight: 41g Reference Standard: DIN EN 62561-4.
Article No.	64 14 11

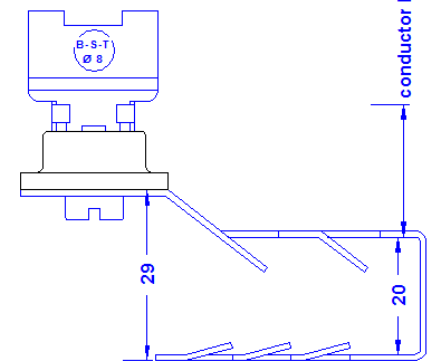
Customs tariff No.: 85389099



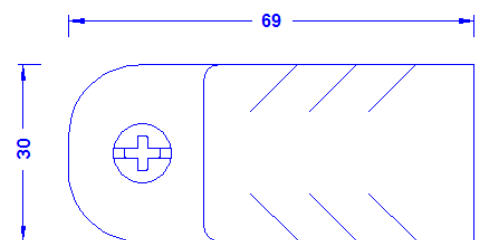
Front cross section



Top



Side



Bottom

Description	RoHS2 (Guideline 2011/65/EU) and REACH (Regulation (EG) No.1907/2006): The substance-requirements and all other requirements of this regulations are observed by this product.
Material of the claw	Stainless spring-band steel 1.4310
Holder	Out of stainless spring-band steel 1.4310 + out of nylon, silver coloured. UV-stabilized, cold impact resistant and halogen-free.
Screw	DIN84M6x12 stainless steel
Clamping range of the claw	25 - 20mm
Conductor leading of the Stainless steel holder	8mm