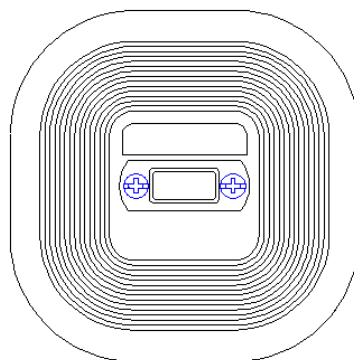


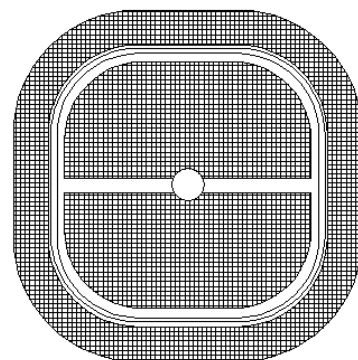
Specification	Pyramid holdfast filled with concrete, with bottom, for flat conductor 30 mm (up to 4mm thickness) or round conductor 6-11mm made of Polypropylen. Black. Weight: 930g
Article No.	45 05 16

DIN EN 62561-4:

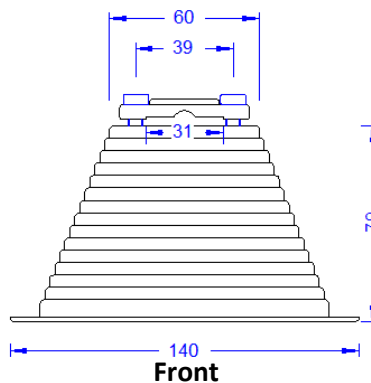
„The fastening of holders to structures covered with tar paper, membrane and gravel roofs is not treated in the present standard due to the multitude of types which are used on modern constructions.“



Top

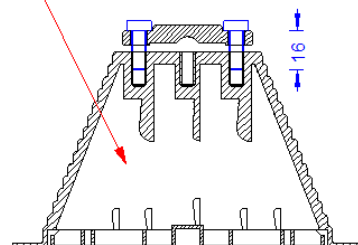


Bottom



Front

Concrete filling :
Frost-proof
(EU norm XF2)



Cross section

Customs tariff No.: 85389099

Description	
Weight	930g
Input	Flat cond. 30 mm (up to 4mm thickness) or round cond. 6-11mm
Material of the holdfast	Polypropylen, black. No halogens; UV-stabilized and cold impact resistant.
Material of the bottom	Polypropylen, black. No halogens.
Screws	DIN84M6X16 combi-screws, stainless steel.
Material of the saddle	Polyamide, grey UV-stabilized and cold impact resistant. No halogens.
Concrete	0,9 kg frost resistant concrete (EU-Norm XF2)